

Your Community Connection

Vol. 1, 2019

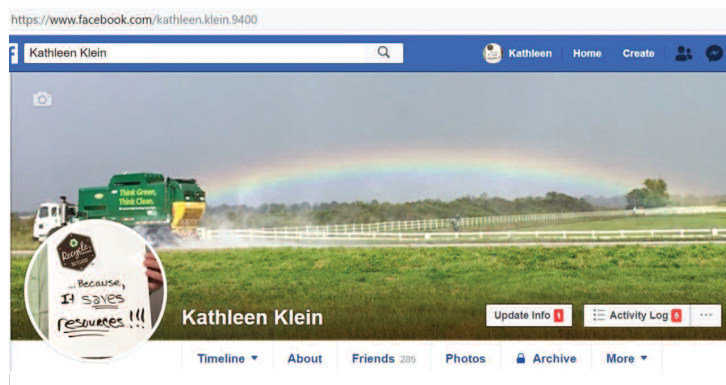
News from Waste Management's Pine Tree Acres Landfill

Pine Tree Acres Landfill Recycling Drop-off Area – On-going Contamination Concerns

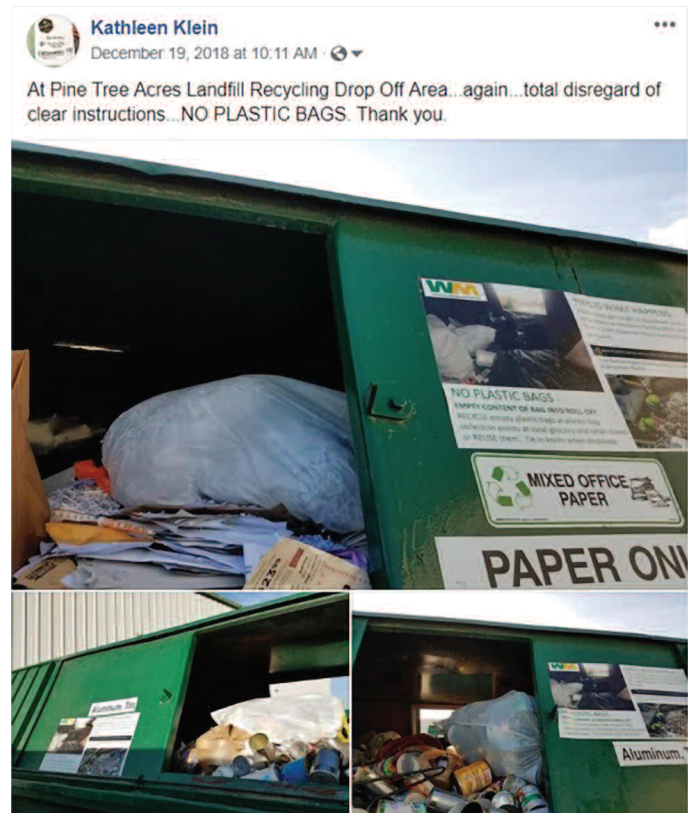
If you follow Waste Management on our local Facebook page you have likely seen postings of photos taken at the Pine Tree Acres Landfill Recycling Drop-off area showing the on-going contamination concerns. Signs in the area clearly state what is and is NOT acceptable, however residents using the drop-off continue to ignore the signage. It is hard to understand why this is occurring, but important to continue to message about.

Anything that is not listed as acceptable should not go in a recycling bin, at home or at Pine Tree Landfill Recycling Drop-off. Please be sure to follow proper recycling guidelines, guidelines serve a purpose, they tell what can and what should not go in the recycle bin. Anything that doesn't belong in the bin is contamination and travels all the way to a Material Recovery Facility (MRF/recycling facility) and then has to travel all the way back to a landfill. This adds cost and creates operational inefficiencies around recycling, not to mention the over-the-road emissions (green house gases) in transporting the material back and forth.

Please follow guidelines and don't be a "wishcycler". "Wishcyclers" are individuals who place items in the recycle bin for several reasons, because they feel guilty throwing them in the landfill, they aren't quite sure if the item is NOT recyclable, or they "wish"/feel the item "should" be recycled/recyclable – "wishcycling". If you feel troubled about throwing things away, find ways to "reduce" and "reuse" when possible – but please don't "wishcycle", it creates contamination and hurts the recycling effort.



<https://www.facebook.com/kathleen.klein.9400>



Follow us on facebook and twitter for local news and information. Learn more about proper recycling at <https://recycleoftenrecycleright.com/>



<https://twitter.com/kathyklein4>

Pine Tree Acres Landfill

36600 29 Mile Road
Lenox, MI 48048

Telephone
586-749-9698
Fax
586-749-6440

Call for current hours of operation as hours may change seasonally.
Monday–Friday 6 a.m. –4:30 p.m.; Saturday 7 a.m.–11 a.m.
Recycling Hours
Every day during normal business hours

For tours or public education presentations, please call the site.

LANDFILL CONCERNS HOTLINE
1-877-360-8582
WM CUSTOMER SERVICE
1-866-797-9018
Please keep these numbers handy.



pinetreeacres.wm.com

Printed on
recycled-content paper.

THINK GREEN.

2018 Pine Tree Acres Completed Projects

In this past year, Waste Management completed the development of cells 24 and 25. Waste Management also gained approval from Lenox Township to add additional volume to the local sewer connect in order to manage additional volumes of leachate (liquid that accumulates in landfill cells as a result of rain and snow).

Early in January 2019, WM completed the removal of additional wooded acreage to the east of cells 24 & 25 for future cells 26, 27 and 30. As well, this summer, the Lowe Plank and 29 Mile Rd. wetland mitigation project was completed, creating 41-acres of wetland



Pine Tree Acres looking east at new cells and forested wetland



SW corner of Lowe Plank & 29 Mile Rd., wetland mitigation

from former farm fields and placing 190-acres of woodland, wetland and riparian buffer into a conservation easement. This was done to create an inland wetland for migratory birds in exchange for the removal of the wooded acreage, and as approved by the Environmental Protection Agency (EPA) and Michigan Department of Environmental Quality (MDEQ).

Six River Land Conservancy will serve as fiduciary steward of the mitigated wetlands to ensure proper maintenance and preservation of this newly developed area going forward.



Pine Tree Acres Landfill
36600 29 Mile Road
Lenox, MI 48048

THINK GREEN.®

wm.com

2018 Waste Management Sustainability Report & 2019 Sustainability Forum

Waste Management is the nation's largest environmental services provider, handling more recyclables in North America than anyone in our industry. If you are interested in learning more about what is happening nationally and globally around waste and recycling, this report provides great insight into exciting innovations and global market trends that impact all of us. The report is long (211 pages) but there are brief sections that cover innovative technologies and organics/food waste management. It also includes updates on Waste Management's progress towards our corporate sustainability goals.

To view the report visit <http://sustainability.wm.com/downloads/report.php>

On January 31, 2019 Waste Management hosted the 2019 Sustainability Forum. Much of the conversation was about plastics in the environment. Viewing information can be found at <https://www.greenbiz.com/event/2019/01/31/2019-waste-management-sustainability-forum-big-ideas-bold-action-better-world>

